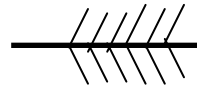


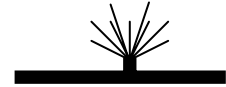
## GLOSSARY OF TERMS USED IN THIS TREE ID KEY

**Needle-shaped:** *More or less, sharp and pointy.*

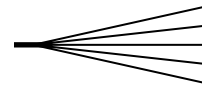
**Needles, single:** *Individual attachment to twig.*



**Needles, cluster:** *A dense group of a dozen or more needles.*



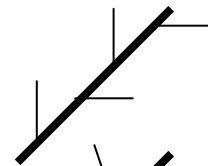
**Needles, bundle:** *A group of 2-5 needles "bundled" together at their bases.*



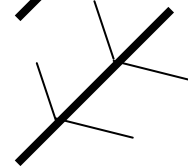
**Needles, flat:** *Much wider than thick. Tends not to roll easily between fingers.*

**Needles, square or round:** *About as wide as thick. Rolls easily between fingers.*

**Branching, Alternate:** *Paired side branches do not occur opposite each other from a main twig. Also true for buds and leaf stem "scars."*



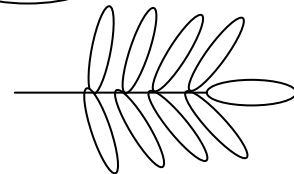
**Branching, opposite:** *Paired side branches occur on opposite sides of a main twig. Also true for buds and leaf stem "scars."*



**Leaves, simple:** *Your basic leaf with one stem and contiguous leaf surface.*



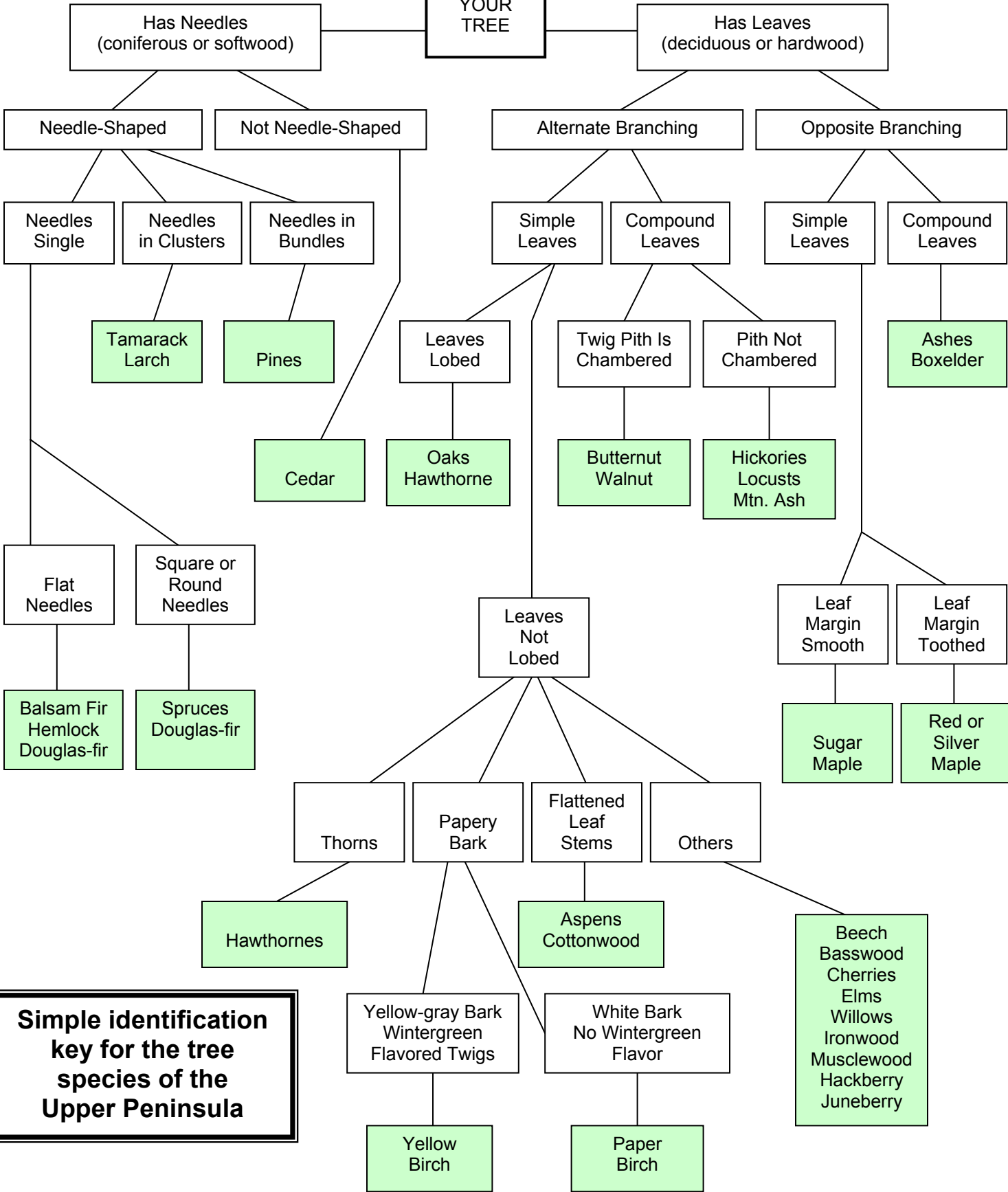
**Leaves, compound:** *One stem, multiple leaf surfaces (looks like separate leaves).*



**Leaves lobed:** *Finger-like projections of leaf, like oaks.*

**Chambered pith:** *Cores of twigs are divided into small chambers.*

**YOUR TREE**



**Simple identification key for the tree species of the Upper Peninsula**