

Great Lakes Maritime Transportation – Did You Know?

Circle the correct response to each question below. How many of these questions can you answer correctly?

Find out if you are a:

Deck Hand = 25% correct (5 correct answers) *You're heading for a shipwreck!!*

First Mate = 50% correct (10 correct answers) *Get the books out and study up!*

Engineer = 75% correct (15 correct answers) *Good job!*

Captain = 100% correct (20 correct answers) *WOW!!*

1. A 1000-foot "laker" can hold enough iron pellets to make how many automobiles in the U.S.?

- a. 500
- b. 5,000
- c. 15,000
- d. 1 million



2. What percentage of the United State's iron ore used in steel production passes through the Poe lock at Sault Ste. Marie, Michigan?

- i. 10%
- ii. 25%
- iii. 90%
- iv. None



3. Which of the following make up “The Big Three” cargoes carried by U.S.–flag lakers *in order of tonnage* on the Great Lakes?

- i. Coal
- ii. Stone
- iii. Pelletized iron ore (taconite pellets)
- iv. Salt
- v. Grain
- vi. Liquid bulk (oil and gasoline)



4. The “head of the lakes” refers to which city?

- a. Chicago
- b. Sault Ste. Marie
- c. Montreal/Quebec
- d. Duluth



5. In which year was the first lock constructed to allow boat passage around the St. Mary’s Rapids?

- 1798 1850 1895 1959



6. What is “Operation Taconite” run by the Coast Guard at Sault Ste. Marie, Michigan?



7. What was the name of the first sailing vessel on the Great Lakes?

- The Griffin The Invincible Lady Elgin Mayflower*

8. Which President ordered the current Whitefish Point Lighthouse to be built?

9. Why did Mr. Carlson, the lighthouse keeper at Whitefish Point in 1918, have the assistant lighthouse keeper and his wife turned over to authorities?



10. When does a 1,000-foot laker hog, sag or list?

11. What does it mean when a large ocean-going vessel (saltie) must “swish and spit” just like you do when the dentist cleans your teeth?

- a. That all the crew has to go brush their teeth right away.
- b. It’s time for the crew to wash the ship by “swishing” water over the deck and polishing it to a “spit” shine.
- c. The water in the ballast tanks needs to be exchanged, either saltwater for fresh, or freshwater for saltwater.



12. How many crew members does it take to load a 1000-foot laker with a full load?

- 1 10 20 50



13. Where is the bell from the Edmund Fitzgerald?

- a. At the bottom of Lake Superior
- b. At the bottom of Lake Michigan
- c. In the Mariners' Church in Detroit
- d. At the Great Lakes Shipwreck Museum at Whitefish Point in Michigan's Upper Peninsula.



14. What are the top 3 products shipped through the Soo Locks each year?

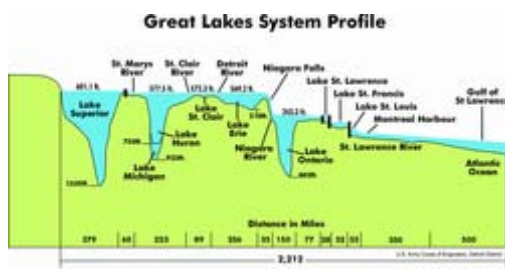
- a. Iron ore (taconite)
- b. limestone
- c. wheat
- d. coal
- e. salt



15. Which of the four Soo Locks is the largest and most used today?

16. How many 1000-foot lakers does it take to carry the cargo carried by six 100-car trains or 2,308 trucks?

- f. One
- g. Two
- h. Three
- i. Four



17. What is the total drop in elevation from Lake Superior to the Atlantic Ocean?

18. What is the drop in elevation between each of the Great Lakes?

- _____ Lake Superior to Lake Huron
- _____ Lake Huron to Lake Erie
- _____ Lake Erie to Lake Ontario
- _____ Lake Ontario to St. Lawrence Seaway

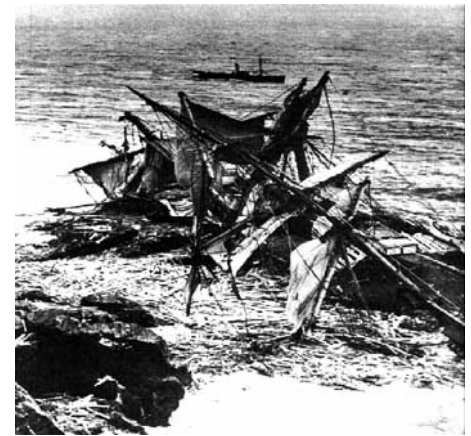
Great Lakes Drainage Basin - St. Lawrence River



19. During which month has there been the greatest number of shipwrecks?

20. What is the total number of lives lost on the Great Lakes in shipping-related casualties in recorded history?

- 500
- 5,000
- 30,000
- 50,000



(Questions 1-10 and 17-20 by Joan Chadde; questions 11-13 by Katherine Roll; questions 14-16 by Lisa Bircher)

11/1/06